

03

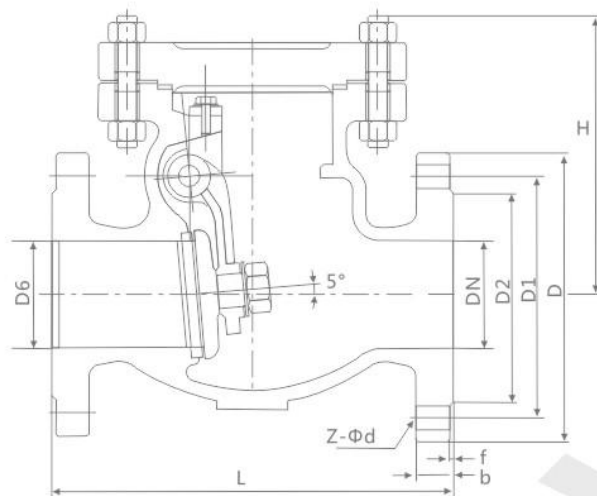
CHECK VALVE SERIES

Valve Manufacturing In Action



GB SWING CHECK VALVE

H44^H_W-16C/P/R



Standards

Design and manufacture as GB/T12236
 Face to face dimensions as GB/T12221
 End flange dimension as JB/T79
 Pressure as JB T9092/

Test Pressure

| Test Item | | Shell Test | Seal Test | Back Seal Test | Air Seal Test |
|--------------------------|------|------------|-----------|----------------|---------------|
| Medium | | | Water | | Air |
| Unit | | MPa | MPa | MPa | MPa |
| Nominal Pressure PN(MPa) | 1.6 | 2.4 | 1.8 | 1.8 | 0.5~0.7 |
| | 2.5 | 3.8 | 2.8 | 2.8 | |
| | 4.0 | 6.0 | 4.4 | 4.4 | |
| | 6.4 | 9.6 | 7.0 | 7.0 | |
| | 10.0 | 15.0 | 11.0 | 11.0 | |
| | 16.0 | 24.0 | 18.0 | 18.0 | |

Materials for Main Parts

| Name | Material | | | | | | | | | |
|-------------|-----------------|-----|------|------|-----|------------|-----|-----|----|--|
| Body/Bonnet | CF8 | CF3 | CF8M | CF3M | WCB | LCB | WC6 | WC9 | C5 | |
| Wedge | CF8 | CF3 | CF8M | CF3M | WCB | LCB | WC6 | WC9 | C5 | |
| Gasket | PTFF | | | | | Graphite | | | | |
| Bolt | Stainless Steel | | | | | 35CrMoA | | | | |
| Nut | Stainless Steel | | | | | 45、35CrMoA | | | | |

GB SWING CHECK VALVE

Main Connection Dimensions

| Type | Nominal diameter DN(mm) | Dimension(mm) | | | | | | | |
|-------------------|-------------------------|---------------|-----|-----|-----|------|--------|--------|-----|
| | | L | D | D1 | D2 | D6 | b-f | z-Φd | H |
| H H44W-16 Y | 20 | 150 | 105 | 75 | 55 | | 14-2 | 4-Φ14 | 100 |
| | 25 | 160 | 115 | 85 | 65 | | 14-2 | 4-Φ14 | 100 |
| | 32 | 180 | 135 | 100 | 78 | | 16-2 | 4-Φ18 | 105 |
| | 40 | 200 | 145 | 110 | 85 | | 16-3 | 4-Φ18 | 115 |
| | 50 | 230 | 160 | 125 | 100 | | 16-3 | 4-Φ18 | 135 |
| | 65 | 290 | 180 | 145 | 120 | | 18-3 | 4-Φ18 | 140 |
| | 80 | 310 | 195 | 160 | 135 | | 20-3 | 8-Φ18 | 145 |
| | 100 | 350 | 215 | 180 | 155 | | 20-3 | 8-Φ18 | 165 |
| | 125 | 400 | 245 | 210 | 185 | | 22-3 | 8-Φ18 | 250 |
| | 150 | 480 | 280 | 240 | 210 | | 24-3 | 8-Φ23 | 295 |
| | 200 | 550 | 335 | 295 | 265 | | 26-3 | 12-Φ23 | 315 |
| | 250 | 650 | 405 | 355 | 320 | | 30-3 | 12-Φ25 | 430 |
| | 300 | 750 | 460 | 410 | 375 | | 30-4 | 12-Φ25 | 480 |
| | 350 | 850 | 520 | 470 | 435 | | 34-4 | 16-Φ25 | 500 |
| | 400 | 950 | 580 | 525 | 485 | | 36-4 | 16-Φ30 | 520 |
| | 450 | 1050 | 640 | 585 | 545 | | 40-4 | 20-Φ30 | 580 |
| 500 | 1150 | 705 | 650 | 608 | | 44-4 | 20-Φ34 | 630 | |
| 600 | 1350 | 840 | 770 | 718 | | 48-5 | 20-Φ41 | 780 | |
| H H44W-25 Y | 20 | 150 | 105 | 75 | 55 | | 16-2 | 4-Φ14 | 100 |
| | 25 | 160 | 115 | 85 | 65 | | 16-2 | 4-Φ14 | 100 |
| | 32 | 180 | 135 | 100 | 78 | | 18-2 | 4-Φ18 | 105 |
| | 40 | 200 | 145 | 110 | 85 | | 18-3 | 4-Φ18 | 115 |
| | 50 | 230 | 160 | 125 | 100 | | 20-3 | 4-Φ18 | 135 |
| | 65 | 290 | 180 | 145 | 120 | | 22-3 | 8-Φ18 | 140 |
| | 80 | 310 | 195 | 160 | 135 | | 22-3 | 8-Φ18 | 145 |
| | 100 | 350 | 230 | 190 | 160 | | 24-3 | 8-Φ23 | 165 |
| | 125 | 400 | 270 | 220 | 188 | | 28-3 | 8-Φ25 | 250 |
| | 150 | 480 | 300 | 250 | 218 | | 30-3 | 8-Φ25 | 295 |
| | 200 | 550 | 360 | 310 | 278 | | 34-3 | 12-Φ25 | 315 |
| | 250 | 650 | 425 | 370 | 332 | | 36-3 | 12-Φ30 | 430 |
| | 300 | 750 | 485 | 430 | 390 | | 40-4 | 16-Φ30 | 480 |
| | 350 | 850 | 550 | 490 | 448 | | 44-4 | 16-Φ34 | 500 |
| | 400 | 950 | 610 | 550 | 505 | | 48-4 | 16-Φ34 | 520 |
| | 450 | 1050 | 660 | 600 | 555 | | 50-4 | 20-Φ34 | 580 |
| 500 | 1150 | 730 | 660 | 610 | | 52-4 | 20-Φ41 | 630 | |
| 600 | 1350 | 840 | 770 | 718 | | 56-5 | 20-Φ41 | 780 | |
| H H44W-40 Y | 20 | 150 | 105 | 75 | 55 | 51 | 16-2 | 4-Φ14 | 100 |
| | 25 | 160 | 115 | 85 | 65 | 58 | 16-2 | 4-Φ14 | 100 |
| | 32 | 180 | 135 | 100 | 78 | 66 | 18-2 | 4-Φ18 | 105 |
| | 40 | 200 | 145 | 110 | 85 | 76 | 18-3 | 4-Φ18 | 115 |
| | 50 | 230 | 160 | 125 | 100 | 88 | 20-3 | 4-Φ18 | 135 |
| | 65 | 290 | 180 | 145 | 120 | 110 | 22-3 | 8-Φ18 | 140 |
| | 80 | 310 | 195 | 160 | 135 | 121 | 22-3 | 8-Φ18 | 145 |
| | 100 | 350 | 230 | 190 | 160 | 150 | 24-3 | 8-Φ23 | 165 |
| | 125 | 400 | 270 | 220 | 188 | 176 | 28-3 | 8-Φ25 | 250 |
| | 150 | 480 | 300 | 250 | 218 | 204 | 30-3 | 8-Φ25 | 295 |
| | 200 | 550 | 375 | 320 | 282 | 260 | 38-3 | 12-Φ30 | 315 |
| | 250 | 650 | 445 | 385 | 345 | 313 | 42-3 | 12-Φ34 | 430 |
| | 300 | 750 | 510 | 450 | 408 | 364 | 46-4 | 16-Φ34 | 480 |
| | 350 | 850 | 570 | 510 | 465 | 422 | 52-4 | 16-Φ34 | 500 |
| | 400 | 950 | 655 | 585 | 535 | 474 | 58-4 | 16-Φ41 | 520 |
| | 450 | 1050 | 680 | 610 | 560 | 524 | 60-4 | 20-Φ41 | 580 |
| 500 | 1150 | 755 | 670 | 612 | 576 | 62-4 | 20-Φ48 | 630 | |
| 600 | 1350 | 890 | 795 | 730 | 678 | 62-5 | 20-Φ54 | 780 | |

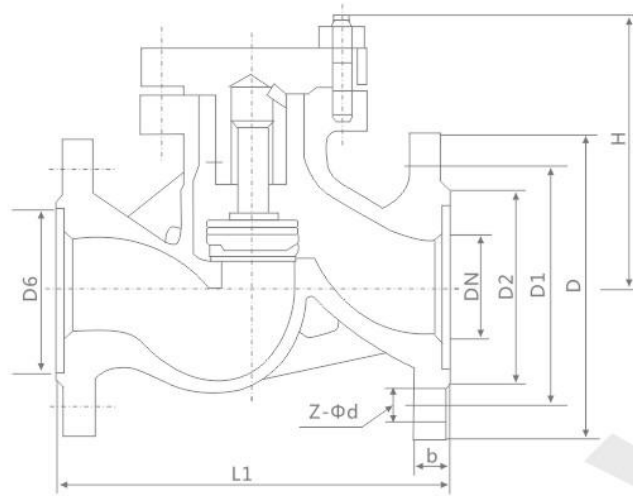
GB SWING CHECK VALVE

Main external and connection dimension

JB/T79.2

| Nominal pressure PN(MPa) | Nominal diameter DN(mm) | Size(mm) | | | | | | | | | Weight (Kg) |
|--------------------------|-------------------------|----------|-----|-----|-----|-----|-------|------|-------|------|-------------|
| | | L | D | D1 | D2 | D6 | b-f | F2 | Z-φd | H | |
| 6.3 | 50 | 300 | 175 | 135 | 105 | 88 | 26-3 | 4 | 4-23 | 192 | 30 |
| | 65 | 340 | 200 | 160 | 130 | 110 | 28-3 | 4 | 8-23 | 207 | 41 |
| | 80 | 380 | 210 | 170 | 140 | 121 | 30-3 | 4 | 8-23 | 207 | 48 |
| | 100 | 430 | 250 | 200 | 168 | 150 | 32-3 | 4.5 | 8-25 | 235 | 72 |
| | 125 | 500 | 295 | 240 | 202 | 176 | 36-3 | 4.5 | 8-30 | 265 | 108 |
| | 150 | 550 | 340 | 280 | 240 | 204 | 38-3 | 4.5 | 8-34 | 297 | 155 |
| | 200 | 650 | 405 | 345 | 300 | 260 | 44-3 | 4.5 | 12-34 | 357 | 217 |
| | 250 | 775 | 470 | 400 | 352 | 313 | 48-3 | 4.5 | 12-41 | 405 | 341 |
| | 300 | 900 | 530 | 460 | 412 | 364 | 54-4 | 4.5 | 16-41 | 465 | 472 |
| | 350 | 1025 | 595 | 525 | 475 | 422 | 60-4 | 5 | 16-41 | 514 | 627 |
| | 400 | 1150 | 670 | 585 | 525 | 474 | 66-4 | 5 | 16-48 | 568 | 882 |
| | 500 | 1400 | 800 | 705 | 640 | 576 | 70-4 | 5 | 20-54 | 620 | 1027 |
| 10.0 | 50 | 300 | 195 | 145 | 112 | 88 | 28-3 | 4 | 4-25 | 192 | 41 |
| | 65 | 340 | 220 | 170 | 138 | 110 | 32-3 | 4 | 8-25 | 207 | 48 |
| | 80 | 380 | 230 | 180 | 148 | 121 | 34-3 | 4 | 8-25 | 235 | 72 |
| | 100 | 430 | 265 | 210 | 172 | 150 | 38-3 | 4.5 | 8-30 | 265 | 108 |
| | 125 | 500 | 310 | 250 | 210 | 176 | 42-3 | 4.5 | 8-34 | 313 | 130 |
| | 150 | 550 | 350 | 290 | 250 | 204 | 46-3 | 4.5 | 12-34 | 360 | 217 |
| | 200 | 650 | 430 | 360 | 312 | 260 | 54-3 | 4.5 | 12-41 | 420 | 341 |
| | 250 | 775 | 500 | 430 | 382 | 313 | 60-3 | 4.5 | 12-41 | 480 | 472 |
| | 300 | 900 | 585 | 500 | 442 | 364 | 70-4 | 4.5 | 16-48 | 520 | 520 |
| | 350 | 1025 | 655 | 560 | 498 | 422 | 76-4 | 5 | 16-54 | 584 | 830 |
| | 400 | 1150 | 715 | 620 | 558 | 474 | 80-4 | 5 | 16-54 | 625 | 1060 |
| | 16.0 | 50 | 300 | 215 | 165 | 132 | 88 | 36-3 | 4 | 8-25 | 251 |
| 65 | | 340 | 245 | 190 | 152 | 110 | 44-3 | 4 | 8-30 | 282 | 58 |
| 80 | | 380 | 260 | 205 | 168 | 121 | 46-3 | 4 | 8-30 | 320 | 110 |
| 100 | | 430 | 300 | 240 | 200 | 150 | 48-3 | 4.5 | 8-34 | 356 | 162 |
| 125 | | 500 | 355 | 285 | 238 | 176 | 60-3 | 4.5 | 8-41 | 393 | 214 |
| 150 | | 550 | 390 | 318 | 270 | 204 | 66-3 | 4.5 | 12-41 | 430 | 267 |
| 200 | | 650 | 480 | 400 | 345 | 260 | 78-3 | 4.5 | 12-48 | 470 | 443 |
| 250 | | 750 | 580 | 485 | 425 | 313 | 88-3 | 4.5 | 12-54 | 514 | 610 |
| 300 | | 900 | 665 | 570 | 510 | 364 | 100-4 | 4.5 | 16-54 | 570 | 685 |
| 25.0 | 50 | 368 | 210 | 160 | 128 | 70 | 40-3 | 5 | 8-25 | 310 | 63 |
| | 65 | 419 | 260 | 203 | 165 | 97 | 48-3 | 5 | 8-30 | 346 | 78 |
| | 80 | 470 | 290 | 230 | 190 | 116 | 54-3 | 5 | 8-34 | 385 | 140 |
| | 100 | 546 | 360 | 292 | 245 | 138 | 66-3 | 6 | 8-41 | 406 | 210 |
| | 125 | 673 | 385 | 318 | 270 | 170 | 76-3 | 6 | 12-41 | 534 | 280 |
| | 150 | 705 | 440 | 360 | 305 | 190 | 82-3 | 6 | 12-45 | 560 | 347 |
| | 200 | 832 | 535 | 440 | 380 | 245 | 92-3 | 6 | 12-51 | 318 | 575 |
| | 250 | 991 | 670 | 572 | 508 | 319 | 110-3 | 6 | 16-55 | 673 | 790 |

H41^H_W-16C/P/R



Standards

Design and manufacture as GB/T12235
 Face to face dimensions as GB/T12221
 End flange dimension as JB/T79
 Pressure test as JB/T9092

Test Pressure

| Test Item | | Shell Test | Seal Test | Back Seal Test | Air Seal Test |
|--------------------------|------|------------|-----------|----------------|---------------|
| Medium | | | Water | | Air |
| Unit | | MPa | MPa | MPa | MPa |
| Nominal Pressure PN(MPa) | 1.6 | 2.4 | 1.8 | 1.8 | 0.5~0.7 |
| | 2.5 | 3.8 | 2.8 | 2.8 | |
| | 4.0 | 6.0 | 4.4 | 4.4 | |
| | 6.4 | 9.6 | 7.0 | 7.0 | |
| | 10.0 | 15.0 | 11.0 | 11.0 | |
| | 16.0 | 24.0 | 18.0 | 18.0 | |

Materials for Main Parts

| Name | Material | | | | | | | | | |
|-------------|-----------------|-----|------|------|-----|------------|-----|-----|----|--|
| Body/Bonnet | CF8 | CF3 | CF8M | CF3M | WCB | LCB | WC6 | WC9 | C5 | |
| Wedge | CF8 | CF3 | CF8M | CF3M | WCB | LCB | WC6 | WC9 | C5 | |
| Gasket | PTFF | | | | | Graphite | | | | |
| Bolt | Stainless Steel | | | | | 35CrMoA | | | | |
| Nut | Stainless Steel | | | | | 45、35CrMoA | | | | |

GB LIFT CHECK VALVE

Main Connection Dimensions

| Type | Nominal diameter DN(mm) | Dimension(mm) | | | | | | | | |
|-------------------|-------------------------|---------------|-----|-----|-----|------|------|--------|--------|-----|
| | | L | D | D1 | D2 | D6 | b-f | f1 | z-Φd | H |
| H H41W-16 Y | 15 | 130 | 95 | 65 | 45 | | 14-2 | | 4-Φ14 | 90 |
| | 20 | 150 | 105 | 75 | 55 | | 14-2 | | 4-Φ14 | 105 |
| | 25 | 160 | 115 | 85 | 65 | | 14-2 | | 4-Φ14 | 115 |
| | 32 | 180 | 135 | 100 | 78 | | 16-2 | | 4-Φ18 | 120 |
| | 40 | 200 | 145 | 110 | 85 | | 16-3 | | 4-Φ18 | 130 |
| | 50 | 230 | 160 | 125 | 100 | | 16-3 | | 4-Φ18 | 140 |
| | 65 | 290 | 180 | 145 | 120 | | 18-3 | | 4-Φ18 | 150 |
| | 80 | 310 | 195 | 160 | 135 | | 20-3 | | 8-Φ18 | 170 |
| | 100 | 350 | 215 | 180 | 155 | | 20-3 | | 8-Φ18 | 185 |
| | 125 | 400 | 245 | 210 | 185 | | 22-3 | | 8-Φ18 | 195 |
| | 150 | 480 | 280 | 240 | 210 | | 24-3 | | 8-Φ23 | 225 |
| | 200 | 600 | 335 | 295 | 265 | | 26-3 | | 12-Φ23 | 250 |
| 250 | 650 | 405 | 355 | 320 | | 30-3 | | 12-Φ25 | 270 | |
| 300 | 750 | 460 | 410 | 375 | | 30-3 | | 12-Φ25 | 300 | |
| H H41W-25 Y | 15 | 130 | 95 | 65 | 45 | | 16-2 | | 4-Φ14 | 90 |
| | 20 | 150 | 105 | 75 | 55 | | 16-2 | | 4-Φ14 | 105 |
| | 25 | 160 | 115 | 85 | 65 | | 16-2 | | 4-Φ14 | 115 |
| | 32 | 180 | 135 | 100 | 78 | | 18-2 | | 4-Φ18 | 120 |
| | 40 | 200 | 145 | 110 | 85 | | 18-3 | | 4-Φ18 | 130 |
| | 50 | 230 | 160 | 125 | 100 | | 20-3 | | 4-Φ18 | 140 |
| | 65 | 290 | 180 | 145 | 120 | | 22-3 | | 8-Φ18 | 150 |
| | 80 | 310 | 195 | 160 | 135 | | 22-3 | | 8-Φ18 | 170 |
| | 100 | 350 | 230 | 190 | 160 | | 24-3 | | 8-Φ23 | 185 |
| | 125 | 400 | 270 | 220 | 188 | | 28-3 | | 8-Φ25 | 195 |
| | 150 | 480 | 300 | 250 | 218 | | 30-3 | | 8-Φ25 | 225 |
| | 200 | 600 | 360 | 310 | 278 | | 34-3 | | 12-Φ25 | 250 |
| 250 | 650 | 425 | 370 | 335 | | 36-3 | | 12-Φ30 | 270 | |
| 300 | 750 | 485 | 430 | 390 | | 40-4 | | 16-Φ30 | 300 | |
| H H41W-40 Y | 25 | 160 | 115 | 85 | 65 | 58 | 16-2 | 4 | 4-Φ14 | 115 |
| | 32 | 180 | 135 | 100 | 78 | 66 | 18-2 | 4 | 4-Φ18 | 120 |
| | 40 | 200 | 145 | 110 | 85 | 76 | 18-3 | 4 | 4-Φ18 | 130 |
| | 50 | 230 | 160 | 125 | 100 | 88 | 20-3 | 4 | 4-Φ18 | 140 |
| | 65 | 290 | 180 | 145 | 120 | 110 | 22-3 | 4 | 8-Φ18 | 150 |
| | 80 | 310 | 195 | 160 | 135 | 121 | 22-3 | 4 | 8-Φ18 | 170 |
| | 100 | 350 | 230 | 190 | 160 | 150 | 24-3 | 4.5 | 8-Φ23 | 185 |
| | 125 | 400 | 270 | 220 | 188 | 176 | 28-3 | 4.5 | 8-Φ25 | 195 |
| | 150 | 480 | 300 | 250 | 218 | 204 | 30-3 | 4.5 | 8-Φ25 | 225 |
| | 200 | 600 | 375 | 320 | 282 | 260 | 38-3 | 4.5 | 12-Φ30 | 250 |
| H H41W-64 Y | 15 | 170 | 105 | 75 | 55 | 40 | 18-2 | 4 | 4-Φ14 | 110 |
| | 20 | 190 | 125 | 90 | 68 | 51 | 20-2 | 4 | 4-Φ18 | 125 |
| | 25 | 210 | 135 | 100 | 78 | 58 | 22-2 | 4 | 4-Φ18 | 152 |
| | 32 | 230 | 150 | 110 | 82 | 66 | 24-2 | 4 | 4-Φ23 | 168 |
| | 40 | 260 | 165 | 125 | 95 | 76 | 24-3 | 4 | 4-Φ23 | 170 |
| | 50 | 300 | 175 | 135 | 105 | 88 | 26-3 | 4 | 4-Φ23 | 188 |
| | 65 | 340 | 200 | 160 | 130 | 110 | 28-3 | 4 | 8-Φ23 | 205 |
| | 80 | 380 | 210 | 170 | 140 | 121 | 30-3 | 4 | 8-Φ23 | 230 |
| | 100 | 430 | 250 | 200 | 168 | 150 | 32-3 | 4.5 | 8-Φ25 | 280 |
| | 125 | 500 | 295 | 240 | 202 | 176 | 36-3 | 4.5 | 8-Φ30 | 300 |
| | 150 | 550 | 340 | 280 | 240 | 204 | 38-3 | 4.5 | 8-Φ34 | 350 |
| | 200 | 650 | 405 | 345 | 300 | 260 | 44-3 | 4.5 | 12-Φ34 | 400 |

GB VERTICAL CHECK VALVE

H42H-¹⁶25C、P、R
40

Purpose

This valve is used as a device to prevent reverse flow of medium on industrial pipelines.

The performance specification

Test pressure: nominal pressure (MPa) 1.6/25/4.0

Shell test: 2.4/3.8/6.0

Sealing test: 1.8/2.8/4.4

Valve body material: WCB (C)/CF8 (P)/CF8M (R)/WC6/WC9 Working temperature: $\leq 425/\leq 100/\leq 100/\leq 550/\leq 550$

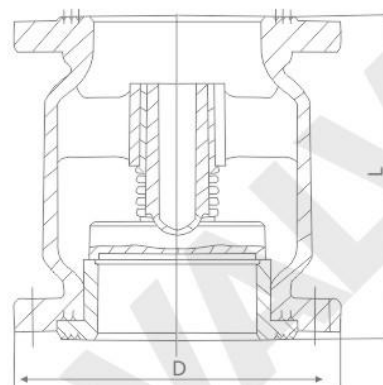
Applicable media: water, steam, oil, nitric acid, acetic acid

Executive standard: Design and manufacturing: Gb12235

Structure length: Gb12221

Connecting flange: JB/T79-1994

Verification and Inspection: JB/T9092-1999



Main external and connection dimension

H42H-16C、P、R

| Nominal diameter DN(mm) | Dimension(mm) | | | | | |
|----------------------------|---------------|-----|-----|-----|------|--------|
| | L | D | D1 | D2 | b-f | z-Φd |
| 15 | 80 | 95 | 65 | 45 | 14-2 | 4-Φ14 |
| 20 | 95 | 105 | 75 | 55 | 14-2 | 4-Φ14 |
| 25 | 105 | 115 | 85 | 65 | 14-2 | 4-Φ14 |
| 32 | 150 | 135 | 100 | 78 | 16-2 | 4-Φ18 |
| 40 | 160 | 145 | 110 | 85 | 16-3 | 4-Φ18 |
| 50 | 170 | 160 | 125 | 100 | 16-3 | 4-Φ18 |
| 65 | 180 | 180 | 145 | 120 | 18-3 | 4-Φ18 |
| 80 | 200 | 195 | 160 | 135 | 20-3 | 8-Φ18 |
| 100 | 210 | 215 | 180 | 155 | 20-3 | 8-Φ18 |
| 125 | 275 | 245 | 210 | 185 | 22-3 | 8-Φ18 |
| 150 | 300 | 280 | 240 | 210 | 24-3 | 8-Φ23 |
| 200 | 380 | 335 | 295 | 265 | 26-3 | 12-Φ23 |
| 250 | 450 | 405 | 355 | 320 | 30-3 | 12-Φ25 |

Main external and connection dimension

H42H-25C、P、R

| Nominal diameter DN(mm) | Dimension(mm) | | | | | |
|----------------------------|---------------|-----|-----|-----|------|--------|
| | L | D | D1 | D2 | b-f | z-Φd |
| 15 | 80 | 95 | 65 | 45 | 16-2 | 4-Φ14 |
| 20 | 95 | 105 | 75 | 55 | 16-2 | 4-Φ14 |
| 25 | 105 | 115 | 85 | 65 | 16-2 | 4-Φ14 |
| 32 | 150 | 135 | 100 | 78 | 18-2 | 4-Φ18 |
| 40 | 160 | 145 | 110 | 85 | 18-2 | 4-Φ18 |
| 50 | 170 | 160 | 125 | 100 | 20-3 | 4-Φ18 |
| 65 | 180 | 180 | 145 | 120 | 22-3 | 8-Φ18 |
| 80 | 200 | 195 | 160 | 135 | 22-3 | 8-Φ18 |
| 100 | 210 | 230 | 190 | 160 | 24-3 | 8-Φ23 |
| 125 | 275 | 270 | 220 | 188 | 28-3 | 8-Φ25 |
| 150 | 300 | 300 | 250 | 218 | 30-3 | 8-Φ25 |
| 200 | 380 | 360 | 310 | 278 | 34-3 | 12-Φ25 |
| 250 | 450 | 425 | 370 | 335 | 36-3 | 12-Φ30 |

API SWING CHECK VALVE

Overview

Our company produces American standard check valves that are designed and manufactured entirely according to American standards. The structure is beautiful and advanced. American standard check valve refers to a valve that automatically opens and closes the valve disc by relying on the flow of the medium itself to prevent medium backflow, also known as a check valve, one-way valve, or backflow valve. A check valve is an automatic valve that primarily functions to prevent media backflow, prevent pump and drive motor reversal, and discharge container media.

Performance parameter

| No. | Project Name | Project Name | | | | | |
|-----|--|--|---------|---------|---------|----------|----------|
| | | 150(Lb) | 300(Lb) | 600(Lb) | 900(Lb) | 1500(Lb) | 2500(Lb) |
| 1 | PN (MPa) | 2.0 | 5.0 | 10.0 | 15.0 | 25.0 | 42.0 |
| 2 | Shell strength test pressure (MPa) | 1.5 Times the nominal pressure at room temperature | | | | | |
| 3 | High-pressure sealing test pressure (MPa) | 1.1Times the nominal pressure at room temperature | | | | | |
| 4 | Nominal pressure at room temperature (MPa) | According to ASME B16.34 pressure temperature rating | | | | | |

Product specification

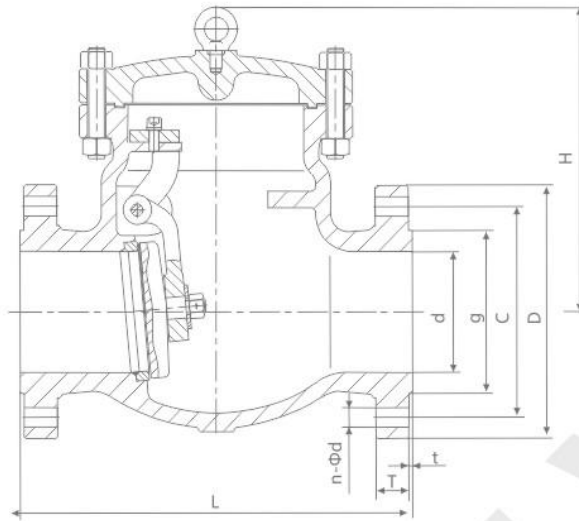
| Design | Structure Length | Connection flange | Test and Inspection | ASME B16.34 |
|-----------------------------|------------------|-----------------------------------|---------------------|-------------|
| BS1868/API6D ASME B16.34 | ASME B16.10 | ASME B16.5 ASME B16.47A Series | API 598/API 6D | ASME B16.34 |

Main components material

| Part Name | Material name | | | | | |
|-----------------------|------------------------------------|-------------------------------|--|--|--|--|
| Body | A216 WCB | A217 WC6 | A351 CF8 | A351 CF8M | A351 CF3 | A351 CF3M |
| Valve cover | A216 WCB | A217 WC6 | A351 CF8 | A351 CF8M | A351 CF3 | A351 CF3M |
| Valve plate | A216 WCB | A217 WC6 | A351 Cf8 | A351 CF8M | A351 CF3 | A351 CF3M |
| Sealing face | 13Cr/STL | STL | 本体/STL | 本体/STL | 本体/STL | 本体/STL |
| Valve shaft | A182 F6a | A182 F11 | A182 F304 | A182 F316 | A182 F304L | A182 F316L |
| Spacer | 304+flexible graphite/soft iron | 304+flexible graphite/F304 | 304+flexible graphite/F304 | 316+flexible graphite/F316 | 304L+flexible graphite/F304L | 316L+flexible graphite/F316L |
| Bolt | A193 B7 | A193 B16 | A193 B8 | A193 B8M | A193 B8 | A193 B8M |
| Nut | A194 2H | A194 4 | A194 8 | A194 8M | A194 8 | A194 8M |
| Operating temperature | -29~425°C | -29~540°C | -46~425°C | -46~425°C | -46~425°C | -46~425°C |
| Applicable medium | Water, steam, oil, etc | Water, steam etc | Nitric acid weakly corrosive medium | Nitric acid weakly corrosive medium | Nitric acid weakly corrosive medium | Nitric acid weakly corrosive medium |

API SWING CHECK VALVE

H44
W-150Lb



Dimensions of Flanged end

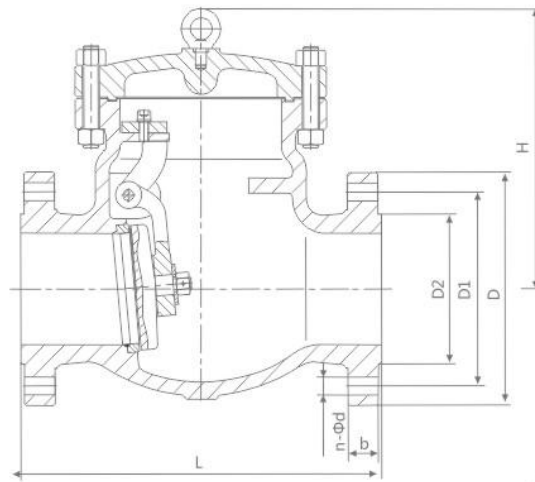
| Nominal pressure | Dimensions(mm) | | | | | | | | | |
|------------------|----------------|------|------|-------|-------|-----|-----|-----|-------|-------|
| | in | d | L | D | C | g | T | t | H | n-Φ |
| Class 150Lb | 1/2" | 15 | 108 | 89 | 60.5 | 35 | 12 | 1.6 | - | 4-15 |
| | 3/4" | 20 | 117 | 98 | 70.0 | 43 | 12 | 1.6 | - | 4-15 |
| | 1" | 25 | 127 | 108 | 79.5 | 51 | 12 | 1.6 | - | 4-15 |
| | 1-1/4" | 32 | 140 | 117 | 89 | 64 | 13 | 1.6 | - | 4-15 |
| | 1-1/2" | 40 | 165 | 127 | 98.5 | 73 | 15 | 1.6 | - | 4-15 |
| | 2" | 50 | 203 | 152 | 120.5 | 92 | 16 | 1.6 | 161 | 4-19 |
| | 2-1/2" | 65 | 216 | 178 | 139.5 | 105 | 18 | 1.6 | 180 | 4-19 |
| | 3" | 80 | 241 | 190 | 152.5 | 127 | 19 | 1.6 | 190 | 4-19 |
| | 4" | 100 | 292 | 229 | 190.5 | 157 | 24 | 1.6 | 203 | 8-19 |
| | 5" | 125 | 330 | 254 | 216 | 186 | 24 | 1.6 | 229 | 8-22 |
| | 6" | 150 | 356 | 279 | 241.5 | 216 | 26 | 1.6 | 257 | 8-22 |
| | 8" | 200 | 495 | 343 | 298.5 | 270 | 29 | 1.6 | 292 | 8-22 |
| | 10" | 250 | 622 | 406 | 362 | 324 | 31 | 1.6 | 355 | 12-25 |
| | 12" | 300 | 698 | 483 | 432 | 381 | 32 | 1.6 | 396 | 12-25 |
| | 14" | 350 | 787 | 533 | 476 | 413 | 35 | 1.6 | 445 | 12-29 |
| | 16" | 400 | 864 | 597 | 540 | 470 | 37 | 1.6 | 490 | 16-29 |
| | 18" | 450 | 978 | 635 | 578 | 533 | 40 | 1.6 | 520 | 16-32 |
| | 20" | 500 | 978 | 698 | 635 | 584 | 43 | 1.6 | 546 | 20-32 |
| | 24" | 600 | 1295 | 813 | 749.5 | 692 | 49 | 1.6 | 880 | 20-35 |
| | 26" | 650 | 1295 | 786 | 744.5 | 711 | 41 | 1.6 | 910 | 36-22 |
| 28" | 700 | 1448 | 837 | 795.5 | 762 | 44 | 1.6 | 935 | 40-22 | |
| 30" | 750 | 1524 | 887 | 846.0 | 813 | 44 | 1.6 | 970 | 44-22 | |

API SWING CHECK VALVE

Dimensions of Flanged end

| Nominal pressure | Dimensions(mm) | | | | | | | | | |
|------------------|----------------|------|------|-----|-------|-----|-----|-----|-------|-------|
| | in | d | L | D | C | g | T | t | H | n-Φ |
| Class 300Lb | 1/2" | 15 | 152 | 95 | 66.5 | 35 | 15 | 1.6 | - | 4-15 |
| | 3/4" | 20 | 178 | 117 | 82.5 | 43 | 16 | 1.6 | - | 4-19 |
| | 1" | 25 | 203 | 124 | 89 | 51 | 18 | 1.6 | - | 4-19 |
| | 1-1/4" | 32 | 216 | 133 | 98.5 | 63 | 19 | 1.6 | - | 4-19 |
| | 1-1/2" | 40 | 229 | 156 | 114.5 | 73 | 21 | 1.6 | - | 4-22 |
| | 2" | 50 | 267 | 165 | 127 | 92 | 22 | 1.6 | 178 | 8-19 |
| | 2-1/2" | 65 | 292 | 190 | 149 | 105 | 25 | 1.6 | 190 | 8-22 |
| | 3" | 80 | 318 | 210 | 168 | 127 | 29 | 1.6 | 216 | 8-22 |
| | 4" | 100 | 356 | 254 | 200 | 157 | 32 | 1.6 | 241 | 8-22 |
| | 5" | 125 | 400 | 279 | 235 | 186 | 35 | 1.6 | 267 | 8-22 |
| | 6" | 150 | 444 | 318 | 270 | 216 | 37 | 1.6 | 305 | 12-22 |
| | 8" | 200 | 533 | 381 | 330 | 270 | 41 | 1.6 | 368 | 12-25 |
| | 10" | 250 | 622 | 444 | 387.5 | 324 | 48 | 1.6 | 394 | 16-29 |
| | 12" | 300 | 711 | 521 | 451 | 381 | 51 | 1.6 | 445 | 16-32 |
| | 14" | 350 | 838 | 584 | 514.5 | 413 | 54 | 1.6 | 470 | 20-32 |
| | 16" | 400 | 864 | 648 | 571.5 | 470 | 57 | 1.6 | 533 | 20-35 |
| | 18" | 450 | 978 | 711 | 628.5 | 533 | 60 | 1.6 | 584 | 24-35 |
| 20" | 500 | 1016 | 775 | 686 | 584 | 64 | 1.6 | 610 | 24-35 | |
| 24" | 600 | 1346 | 914 | 813 | 692 | 70 | 1.6 | 900 | 24-41 | |
| Class 600Lb | 2" | 50 | 292 | 165 | 127 | 92 | 33 | 6.4 | 203 | 8-19 |
| | 2-1/2" | 65 | 330 | 190 | 149 | 105 | 36 | 6.4 | 229 | 8-22 |
| | 3" | 80 | 356 | 210 | 168 | 127 | 39 | 6.4 | 235 | 8-22 |
| | 4" | 100 | 432 | 273 | 216 | 157 | 45 | 6.4 | 286 | 8-25 |
| | 5" | 125 | 508 | 330 | 266.5 | 186 | 52 | 6.4 | 292 | 8-29 |
| | 6" | 150 | 559 | 356 | 292 | 216 | 55 | 6.4 | 330 | 12-29 |
| | 8" | 200 | 660 | 419 | 349 | 270 | 63 | 6.4 | 381 | 12-32 |
| | 10" | 250 | 787 | 508 | 432 | 324 | 71 | 6.4 | 457 | 16-35 |
| | 12" | 300 | 838 | 559 | 489 | 381 | 74 | 6.4 | 584 | 20-35 |
| | 14" | 350 | 889 | 603 | 527 | 413 | 77 | 6.4 | 635 | 20-38 |
| | 16" | 400 | 991 | 686 | 603 | 470 | 84 | 6.4 | 684 | 20-41 |
| | 18" | 450 | 1092 | 743 | 654 | 533 | 90 | 6.4 | 752 | 20-44 |
| 20" | 500 | 1194 | 813 | 724 | 584 | 96 | 6.4 | 975 | 24-44 | |

JIS SWING CHECK VALVE



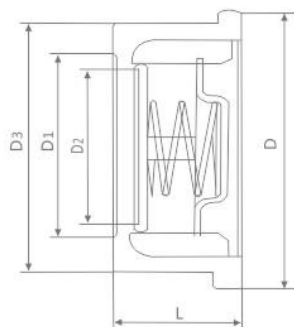
Product specification

| Design | Structure Length | Connection flange | Pressure-temperature | Test and Inspection |
|-----------------|------------------|-------------------|----------------------|---------------------|
| JIS B2074 B2084 | JIS B2002 | JIS B2212 B2214 | JIS B2074 B2084 | JIS B2003 |

Dimensions of Flanged end

| DN | | 10K | | | | | | |
|-----|--------|-----|-----|-----|-----|----|-------|-----|
| mm | in | L | D | D1 | D2 | b | n-Φd | H |
| 50 | 2" | 203 | 155 | 120 | 100 | 16 | 4-19 | 165 |
| 65 | 2 1/2" | 216 | 175 | 140 | 120 | 18 | 4-19 | 175 |
| 80 | 3" | 241 | 185 | 150 | 130 | 18 | 8-19 | 190 |
| 100 | 4" | 292 | 210 | 175 | 155 | 18 | 8-19 | 215 |
| 150 | 6" | 406 | 280 | 240 | 215 | 22 | 8-23 | 265 |
| 200 | 8" | 495 | 330 | 290 | 265 | 22 | 12-23 | 320 |
| 250 | 10" | 622 | 400 | 355 | 325 | 24 | 12-25 | 365 |
| 300 | 12" | 698 | 445 | 400 | 370 | 24 | 16-25 | 415 |
| 350 | 14" | 787 | 490 | 445 | 415 | 26 | 16-25 | 460 |

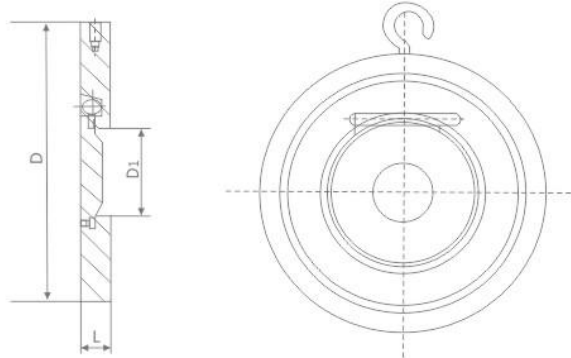
CLAMP TYPE STAINLESS STEEL CHECK VALVE



Main dimensions and weight

| Nominal pressure PN(MPa) | Nominal diameter DN(mm) | Size(mm) | | | Weight (Kg) | Piping flange (for reference) | | | |
|-----------------------------|----------------------------|----------|-----|-----|------------------|--|-----------------|-----------------|----------------|
| | | L | d | A | | Bolt hole center circle diameter D1 | Number of bolts | Bolt diameter D | Bolt length L1 |
| 1.0 1.6 | 15 | 16 | 45 | 18 | 0.12 | 65 | 4 | M12 | 75 |
| | 20 | 19 | 55 | 25 | 0.24 | 75 | 4 | M12 | 90 |
| | 25 | 22 | 65 | 32 | 0.34 | 85 | 4 | M12 | 90 |
| | 32 | 28 | 78 | 38 | 0.53 | 100 | 4 | M16 | 100 |
| | 40 | 32 | 85 | 45 | 0.80 | 110 | 4 | M16 | 105 |
| | 50 | 40 | 100 | 57 | 1.2 | 125 | 4 | M16 | 125 |
| | 65 | 46 | 120 | 73 | 2.2 | 145 | 4 | M16 | 130 |
| | 80 | 50 | 135 | 89 | 3.1 | 160 | 8 | M16 | 135 |
| | 100 | 60 | 155 | 108 | 5.7 | 180 | 8 | M16 | 150 |
| | 125 | 90 | 185 | 133 | 10 | 210 | 8 | M16 | 180 |
| | 150 | 106 | 210 | 159 | 14 | 240 | 8 | M20 | 210 |
| | 200 | 140 | 265 | 219 | 24 | 295 | 12 | M20 | 240 |
| 250 | 160 | 320 | 273 | 35 | 355 | 12 | M20 | 260 | |
| 2.5 | 15 | 16 | 45 | 18 | 0.12 | 65 | 4 | M12 | 80 |
| | 20 | 19 | 55 | 25 | 0.24 | 75 | 4 | M12 | 90 |
| | 25 | 22 | 65 | 32 | 0.34 | 85 | 4 | M12 | 90 |
| | 32 | 28 | 78 | 38 | 0.53 | 100 | 4 | M16 | 110 |
| | 40 | 32 | 85 | 45 | 0.80 | 110 | 4 | M16 | 115 |
| | 50 | 40 | 100 | 57 | 1.2 | 125 | 4 | M16 | 125 |
| | 65 | 46 | 120 | 73 | 2.2 | 145 | 8 | M16 | 135 |
| | 80 | 50 | 135 | 89 | 3.1 | 160 | 8 | M16 | 145 |
| | 100 | 60 | 160 | 108 | 7.0 | 190 | 8 | M20 | 160 |
| | 125 | 90 | 188 | 133 | 12 | 220 | 8 | M22 | 205 |
| | 150 | 106 | 218 | 159 | 15 | 250 | 8 | M22 | 225 |
| | 200 | 140 | 278 | 219 | 26 | 310 | 12 | M22 | 260 |
| 250 | 160 | 332 | 273 | 40 | 370 | 12 | M27 | 280 | |
| 4.0 | 15 | 16 | 45 | 18 | 15 | 65 | 4 | M12 | 80 |
| | 20 | 19 | 55 | 25 | 19 | 75 | 4 | M12 | 90 |
| | 25 | 22 | 65 | 32 | 24 | 85 | 4 | M12 | 90 |
| | 32 | 28 | 78 | 38 | 31 | 100 | 4 | M16 | 110 |
| | 40 | 32 | 85 | 45 | 39 | 110 | 4 | M16 | 115 |
| | 50 | 40 | 100 | 57 | 48 | 125 | 4 | M16 | 125 |
| | 65 | 46 | 120 | 73 | 63 | 145 | 8 | M16 | 135 |
| | 80 | 50 | 135 | 89 | 78 | 160 | 8 | M16 | 145 |
| | 100 | 60 | 160 | 108 | 98 | 190 | 8 | M20 | 160 |
| | 125 | 90 | 188 | 133 | 123 | 220 | 8 | M22 | 205 |
| | 150 | 106 | 218 | 159 | 148 | 250 | 8 | M22 | 225 |
| | 200 | 140 | 282 | 219 | 248 | 320 | 12 | M27 | 275 |
| 250 | 160 | 345 | 273 | 198 | 385 | 12 | M30 | 295 | |

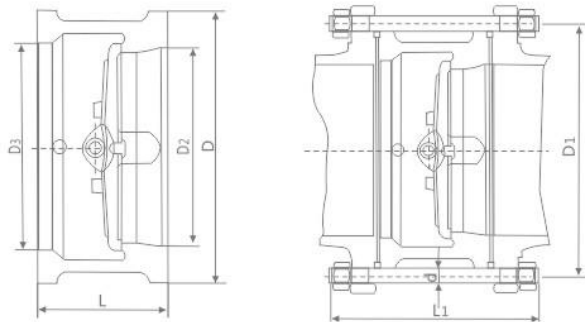
CLAMP TYPE STAINLESS STEEL CHECK VALVE



Main dimensions and weight

| Nominal pressure PN(MPa) | Nominal diameter DN(mm) | Size(mm) | | | Piping flange (for reference) | | |
|-----------------------------|----------------------------|----------|-----|------|--|-----------------|-----------------|
| | | L | d | D1 | Bolt hole center circle diameter D1 | Number of bolts | Bolt diameter D |
| 1.0 | 50 | 14.5 | 100 | 25 | 125 | 4 | M16 |
| | 60 | 14.5 | 120 | 38 | 145 | 4 | M16 |
| | 80 | 14.5 | 135 | 46 | 160 | 4 | M16 |
| | 100 | 14.5 | 155 | 71.5 | 180 | 8 | M16 |
| | 125 | 16 | 185 | 95 | 210 | 8 | M16 |
| | 150 | 19 | 210 | 114 | 240 | 8 | M20 |
| | 200 | 29 | 265 | 140 | 295 | 8 | M20 |
| | 250 | 29 | 320 | 188 | 350 | 12 | M20 |
| | 300 | 38 | 368 | 216 | 400 | 12 | M20 |
| | 350 | 41 | 428 | 263 | 460 | 16 | M20 |
| | 400 | 51 | 482 | 305 | 515 | 16 | M24 |
| | 450 | 51 | 532 | 356 | 565 | 20 | M24 |
| | 500 | 65 | 585 | 406 | 620 | 20 | M24 |
| 600 | 70 | 685 | 482 | 725 | 20 | M27 | |
| 1.6 | 50 | 14.5 | 100 | 25 | 125 | 4 | M16 |
| | 60 | 14.5 | 120 | 38 | 145 | 4 | M16 |
| | 80 | 14.5 | 135 | 46 | 160 | 8 | M16 |
| | 100 | 14.5 | 155 | 71.5 | 180 | 8 | M16 |
| | 125 | 16 | 185 | 95 | 210 | 8 | M16 |
| | 150 | 19 | 210 | 114 | 240 | 8 | M20 |
| | 200 | 29 | 265 | 140 | 295 | 12 | M20 |
| | 250 | 29 | 320 | 188 | 355 | 12 | M24 |
| | 300 | 38 | 375 | 216 | 410 | 12 | M24 |
| | 350 | 41 | 435 | 263 | 470 | 16 | M24 |
| | 400 | 51 | 485 | 305 | 525 | 16 | M27 |
| | 450 | 51 | 545 | 356 | 585 | 20 | M27 |
| | 500 | 65 | 608 | 406 | 650 | 20 | M30 |
| 600 | 70 | 718 | 482 | 770 | 20 | M33 | |
| 2.5 | 50 | 14.5 | 100 | 25 | 125 | 4 | M16 |
| | 60 | 14.5 | 120 | 38 | 145 | 8 | M16 |
| | 80 | 14.5 | 135 | 46 | 160 | 8 | M16 |
| | 100 | 14.5 | 160 | 71.5 | 190 | 8 | M20 |
| | 125 | 16 | 188 | 95 | 220 | 8 | M24 |
| | 150 | 19 | 218 | 114 | 250 | 8 | M24 |
| | 200 | 29 | 278 | 140 | 310 | 12 | M24 |
| | 250 | 29 | 332 | 188 | 370 | 12 | M27 |
| | 300 | 38 | 390 | 216 | 430 | 16 | M27 |
| | 350 | 41 | 448 | 263 | 490 | 16 | M30 |
| | 400 | 51 | 505 | 305 | 550 | 16 | M33 |
| | 450 | 51 | 555 | 356 | 600 | 20 | M33 |
| | 500 | 65 | 610 | 406 | 660 | 20 | M33 |
| 600 | 70 | 718 | 482 | 770 | 20 | M36 | |
| 4.0 | 50 | 14.5 | 100 | 51 | 125 | 4 | M16 |
| | 60 | 14.5 | 120 | 65 | 145 | 8 | M16 |
| | 80 | 14.5 | 135 | 80 | 160 | 8 | M16 |
| | 100 | 14.5 | 160 | 105 | 190 | 8 | M20 |
| | 125 | 16 | 188 | 127 | 220 | 8 | M24 |
| | 150 | 19 | 218 | 152 | 250 | 8 | M24 |
| | 200 | 29 | 282 | 203 | 320 | 12 | M27 |
| | 250 | 29 | 345 | 254 | 385 | 12 | M30 |
| | 300 | 38 | 408 | 305 | 405 | 16 | M30 |
| | 350 | 41 | 465 | 350 | 510 | 16 | M33 |
| | 400 | 51 | 535 | 400 | 585 | 16 | M36 |
| | 450 | 51 | 560 | 450 | 610 | 20 | M36 |
| | 500 | 65 | 612 | 500 | 670 | 20 | M39 |
| 600 | 70 | 750 | 600 | 795 | 20 | M45 | |

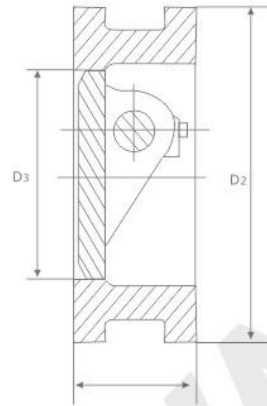
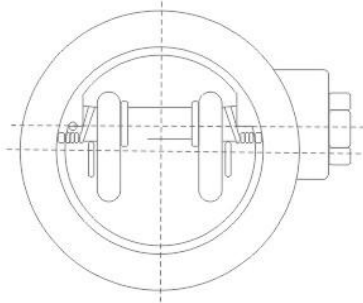
CLAMP TYPE STAINLESS STEEL CHECK VALVE



Main dimensions and weight

| Nominal pressure PN(MPa) | Nominal diameter DN(mm) | Size(mm) | | | | Weight (Kg) | Piping flange (for reference) | | | |
|-----------------------------|----------------------------|----------|------|------|------|------------------|--|-----------------|-----------------|----------------|
| | | L | d | D3 | D2 | | Bolt hole center circle diameter D1 | Number of bolts | Bolt diameter D | Bolt length L1 |
| 10 | 40 | 60 | 96 | 46 | 41 | 2 | 110 | 4 | M16 | 150 |
| | 50 | 60 | 109 | 56 | 51 | 2 | 125 | 4 | M16 | 150 |
| | 65 | 67 | 129 | 73 | 65 | 3 | 145 | 4 | M16 | 155 |
| | 80 | 73 | 144 | 88 | 80 | 4 | 160 | 8 | M16 | 160 |
| | 100 | 73 | 164 | 108 | 102 | 6 | 180 | 8 | M16 | 165 |
| | 125 | 83 | 194 | 132 | 127 | 8 | 210 | 8 | M16 | 180 |
| | 150 | 98 | 220 | 160 | 152 | 12 | 240 | 8 | M20 | 205 |
| | 200 | 127 | 275 | 210 | 203 | 24 | 295 | 8 | M20 | 235 |
| | 250 | 146 | 330 | 266 | 254 | 35 | 350 | 12 | M20 | 255 |
| | 300 | 181 | 380 | 310 | 305 | 48 | 400 | 12 | M20 | 290 |
| | 350 | 184 | 440 | 355 | 350 | 78 | 460 | 16 | M20 | 295 |
| | 400 | 198 | 493 | 405 | 400 | 106 | 515 | 16 | M24 | 310 |
| | 450 | 203 | 543 | 455 | 450 | 135 | 565 | 20 | M24 | 325 |
| | 500 | 219 | 598 | 505 | 500 | 165 | 620 | 20 | M24 | 345 |
| | 600 | 222 | 698 | 605 | 600 | 260 | 725 | 20 | M24 | 355 |
| | 700 | 305 | 811 | 700 | 695 | 360 | 840 | 24 | M27 | 440 |
| 800 | 305 | 918 | 800 | 796 | 540 | 950 | 24 | M30 | 450 | |
| 900 | 368 | 1018 | 903 | 898 | 620 | 1050 | 28 | M30 | 520 | |
| 1000 | 432 | 1124 | 1055 | 1050 | 880 | 1160 | 28 | M33 | 590 | |
| 1200 | 524 | 1340 | 1205 | 1200 | 1380 | 1380 | 32 | M36 | 695 | |
| 1.6 | 40 | 60 | 96 | 46 | 41 | 2 | 110 | 4 | M16 | 150 |
| | 50 | 60 | 109 | 56 | 51 | 2 | 125 | 4 | M16 | 150 |
| | 65 | 67 | 129 | 73 | 65 | 3 | 145 | 4 | M16 | 155 |
| | 80 | 73 | 144 | 88 | 80 | 4 | 160 | 8 | M16 | 160 |
| | 100 | 73 | 164 | 108 | 102 | 6 | 180 | 8 | M16 | 165 |
| | 125 | 83 | 194 | 132 | 127 | 8 | 210 | 8 | M16 | 180 |
| | 150 | 98 | 220 | 160 | 152 | 13 | 240 | 8 | M20 | 205 |
| | 200 | 127 | 275 | 210 | 203 | 24 | 295 | 12 | M20 | 235 |
| | 250 | 146 | 333 | 266 | 254 | 37 | 355 | 12 | M24 | 265 |
| | 300 | 181 | 288 | 310 | 305 | 50 | 410 | 12 | M24 | 305 |
| | 350 | 184 | 448 | 355 | 350 | 80 | 470 | 16 | M24 | 310 |
| | 400 | 198 | 498 | 405 | 400 | 110 | 525 | 16 | M27 | 330 |
| | 450 | 203 | 558 | 455 | 450 | 145 | 585 | 20 | M27 | 345 |
| | 500 | 219 | 630 | 505 | 500 | 180 | 650 | 20 | M30 | 370 |
| | 600 | 222 | 734 | 605 | 600 | 280 | 770 | 20 | M33 | 380 |
| | 700 | 305 | 802 | 700 | 695 | 380 | 840 | 24 | M33 | 470 |
| 800 | 305 | 912 | 800 | 796 | 560 | 950 | 24 | M36 | 475 | |
| 900 | 368 | 1012 | 903 | 898 | 640 | 1050 | 28 | M36 | 545 | |
| 1000 | 432 | 1126 | 1055 | 1050 | 900 | 1170 | 28 | M39 | 620 | |
| 1200 | 524 | 1340 | 1205 | 1200 | 1400 | 1390 | 32 | M45 | 735 | |
| 2.5 | 40 | 60 | 96 | 46 | 41 | 2 | 110 | 4 | M16 | 150 |
| | 50 | 60 | 109 | 56 | 51 | 2 | 125 | 4 | M16 | 150 |
| | 65 | 67 | 129 | 73 | 65 | 3 | 145 | 4 | M16 | 160 |
| | 80 | 73 | 144 | 88 | 80 | 4 | 160 | 8 | M16 | 170 |
| | 100 | 73 | 170 | 108 | 102 | 6 | 190 | 8 | M20 | 180 |
| | 125 | 83 | 198 | 132 | 127 | 8 | 220 | 8 | M24 | 205 |
| | 150 | 98 | 228 | 160 | 152 | 14 | 250 | 8 | M24 | 220 |
| | 200 | 127 | 288 | 210 | 203 | 27 | 310 | 12 | M24 | 255 |
| | 250 | 146 | 343 | 266 | 254 | 42 | 370 | 12 | M27 | 285 |
| | 300 | 181 | 403 | 310 | 305 | 54 | 430 | 12 | M27 | 325 |
| | 350 | 184 | 460 | 355 | 350 | 86 | 490 | 16 | M30 | 340 |
| | 400 | 198 | 520 | 405 | 400 | 120 | 550 | 16 | M33 | 360 |
| | 450 | 203 | 565 | 455 | 450 | 150 | 600 | 20 | M33 | 375 |
| | 500 | 219 | 622 | 505 | 500 | 200 | 660 | 20 | M33 | 395 |
| | 600 | 222 | 732 | 605 | 600 | 340 | 770 | 20 | M36 | 410 |
| | 700 | 305 | 831 | 700 | 695 | 400 | 875 | 24 | M39 | 500 |
| 800 | 305 | 942 | 800 | 796 | 580 | 990 | 24 | M45 | 520 | |
| 900 | 368 | 1040 | 903 | 898 | 660 | 1090 | 28 | M45 | 590 | |
| 1000 | 432 | 1155 | 1055 | 1050 | 960 | 1210 | 28 | M52 | 675 | |
| 1200 | 524 | 1365 | 1205 | 1200 | 1440 | 1420 | 32 | M52 | 790 | |

CLAMP CHECK VALVE



Main technique parameter

| Model | Nominal pressure PN(MPa) | Verification pressure PS(MPa) | | Working temperature (°C) | Applicable medium |
|------------------------------|--------------------------|--|--|-----------------------------------|------------------------------------|
| | | Case | Seal | | |
| H77X H77H H77Y H77W | 1.0 | 1.5 Times the nominal pressure at room temperature | 1.1 Times the nominal pressure at room temperature | Soft seal: <80 Hard seal: <450 | Water, gas, oil, nitric acid, etc. |
| | 1.6 | | | | |
| | 2.5 | | | | |
| | 4.0 | | | | |
| | 6.4 | | | | |

Main parts material

| Part name | Material | | | | |
|-----------------|----------------------------------|----------------------------------|------------------------------|------------------------------------|-----------------------------------|
| | H77X ^{10C, 25P, 16, 40} | H77H ^{16C, 40P, 25, 64} | H77Y-25I 40I 64I | H77W ^{16C, 25P, 25C, 40P} | H7W ^{10P, 25P, 16P, 40P} |
| Body, disc | Cast steel WCB | | Cr-Mo steel | Cast steel WCB | 0Cr18Ni90 |
| Stem | 2Cr13 | 0Cr18Ni9 | | 2Cr13 | |
| Body Seal | - | Built-up welding alloy welds | Built-up welding alloy welds | - | - |
| Help off spring | 0Cr18Ni9 | | Heat-resistant alloy | | 0Cr18Ni90 |

Main external dimension

| Nominal diameter DN(mm) | L | D2 | D3 | | Nominal Diameter DN(mm) | L | D2 | D3 | |
|-------------------------|-----|-----|------|----------------------|-------------------------|-----|------|------|----------------------|
| | | | H77X | H77H H77Y H77W | | | | H77X | H77H H77Y H77W |
| 50 | 43 | 100 | 43 | 46 | 400 | 140 | 485 | 376 | 390 |
| 80 | 64 | 135 | 71 | 80 | 450 | 152 | 545 | 427 | 427 |
| 100 | 64 | 155 | 91.5 | 94 | 500 | 152 | 608 | 479 | 490 |
| 125 | 70 | 185 | 115 | 118 | 600 | 178 | 718 | 579 | 588 |
| 150 | 76 | 210 | 141 | 145 | 700 | 229 | 800 | 675 | 686 |
| 200 | 89 | 265 | 191 | 200 | 800 | 241 | 905 | 774 | 784 |
| 250 | 114 | 320 | 230 | 250 | 900 | 241 | 1005 | 875 | - |
| 300 | 114 | 375 | 290 | 300 | 1000 | 300 | 1115 | 974 | - |
| 350 | 127 | 435 | 340 | 340 | 1200 | 350 | 1325 | 1164 | - |